

Standard Accessories & Roof Accessory Details

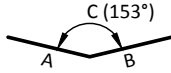
STANDARD DECK ACCESSORIES

Notes:

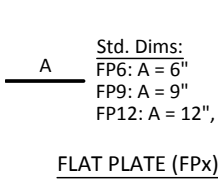
- Accessories are furnished with G60 galvanized coating minimum, in 10'-0" lengths.
- Standard accessories are 20 gage - U.N.O.
- New Millennium can provide special light-gage accessories to meet your project requirements, including notched or reinforced Pour Stops and accessories made of 304 stainless steel. Contact New Millennium for availability and pricing.

Std. Dims:

RVP1: A & B = 4½"
RVP2: A & B = 6"

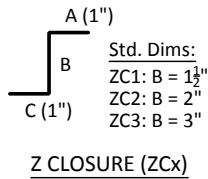


RIDGE/VALLEY PLATE (RVPx)



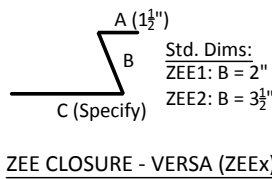
Std. Dims:
FP6: A = 6"
FP9: A = 9"
FP12: A = 12", 18 Ga.

FLAT PLATE (FPx)



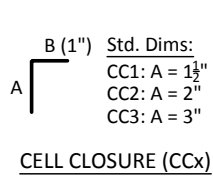
Std. Dims:
ZC1: B = 1½"
ZC2: B = 2"
ZC3: B = 3"

Z CLOSURE (ZCx)



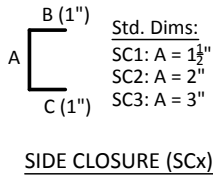
Std. Dims:
ZEE1: B = 2"
ZEE2: B = 3½"

ZEE CLOSURE - VERSA (ZEEEx)



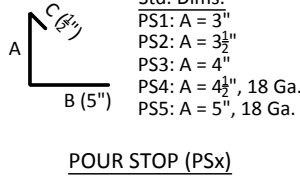
Std. Dims:
CC1: A = 1½"
CC2: A = 2"
CC3: A = 3"

CELL CLOSURE (CCx)



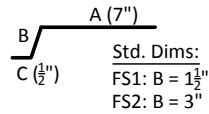
Std. Dims:
SC1: A = 1½"
SC2: A = 2"
SC3: A = 3"

SIDE CLOSURE (SCx)



Std. Dims:
PS1: A = 3"
PS2: A = 3½"
PS3: A = 4"
PS4: A = 4½", 18 Ga.
PS5: A = 5", 18 Ga.

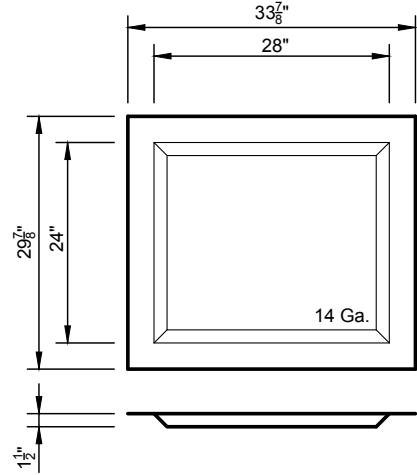
POUR STOP (PSx)



FILLER SHEET - B & N (FSx)

Std. Dims:
GF3: A = 4" (3" Gap)
GF6: A = 7", 14 Ga. (6" Gap)
GF9: A = 10", 14 Ga. (9" Gap)
GF12: A = 13", 12 Ga. (12" Gap)
Contact New Millennium for gage reqmts. when total NW concrete slab exceeds 12"

GIRDER FILLER (GFx)



RECESSED SUMP PAN (SUMP)

MISC. STOCK ITEMS

10-1/10-1FM: #10-16 x ¾" Type 1 Side Lap Screw
10-3/10-3FM: #10-16 X ¾" Type 3 Side Lap Screw
12-3/12-3FM: #12-14 X ¾" Type 3 Side Lap Screw
12-5/12-5FM: #12-24 X 1¼" Type 5 Support Screw
COL: 12" x 24" x 20 Gage Plate Column Closure or 27" x 96" Metal Lath-Type Column Closure*
WW: Weld Washer w/ ⅜" Ø Hole, 16 Ga.
* Only Available at Certain Facilities

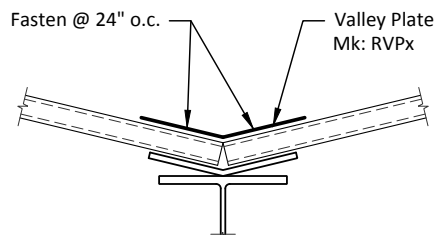
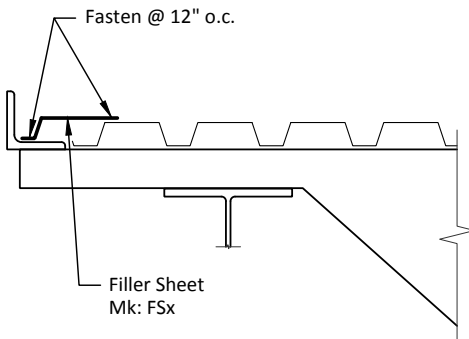
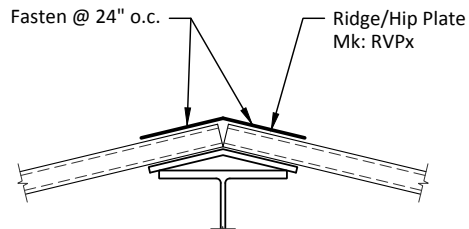
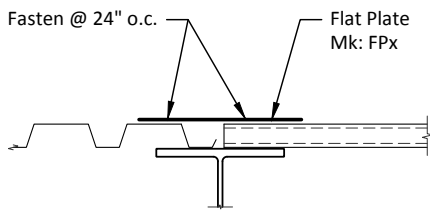
MISC. SPECIAL ITEMS**

Piercing & Non-Piercing Hanger Tabs
Top/Bottom Side Flexible Rubber Closures
** Not supplied by New Millennium

ROOF DECK ACCESSORY INSTALLATION DETAILS

Note:

- Accessories shall be attached to supporting structure or deck as required for serviceability, but spaced not to exceed criteria shown in details.

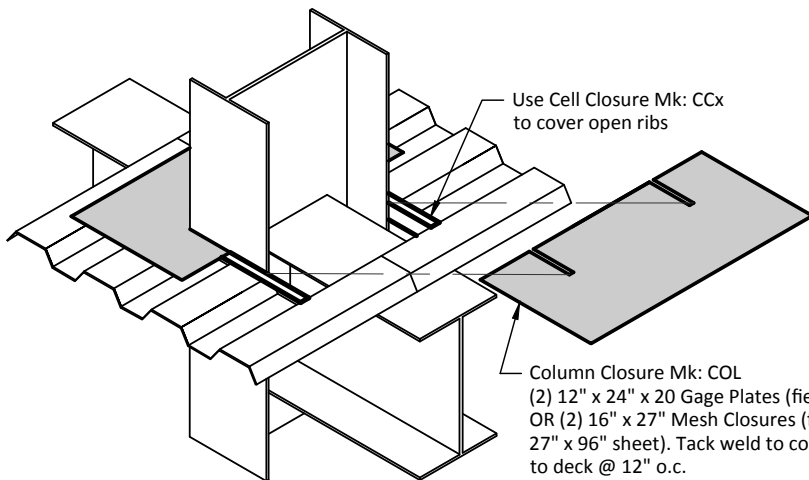
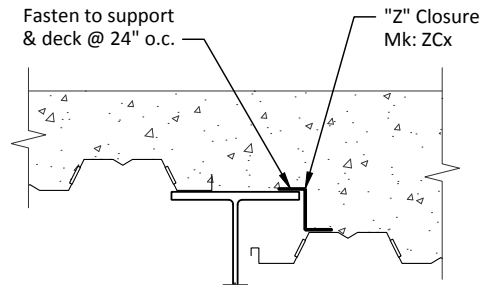
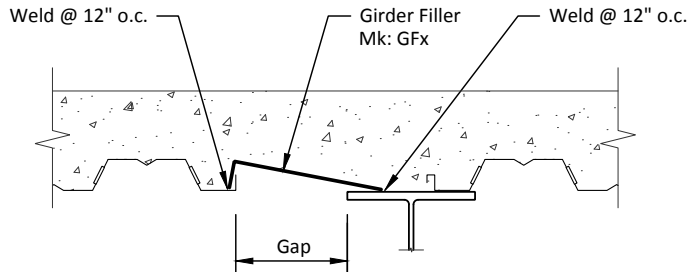
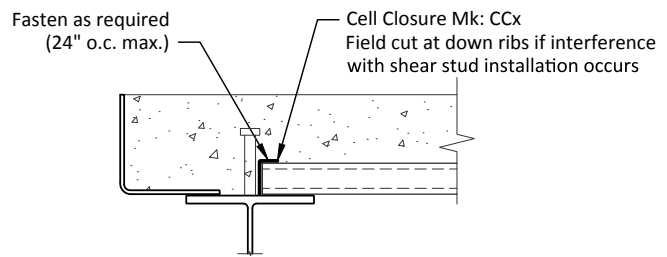
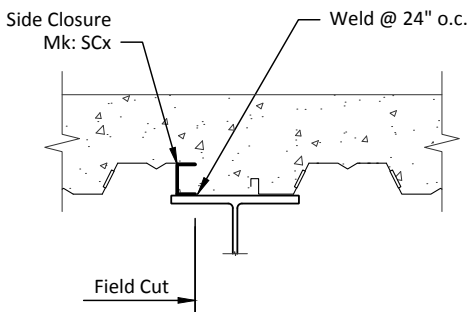
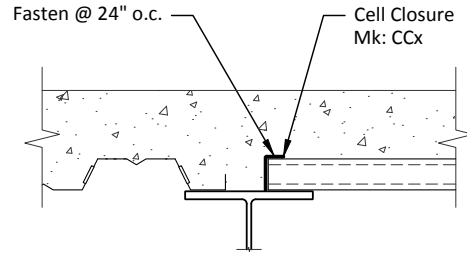
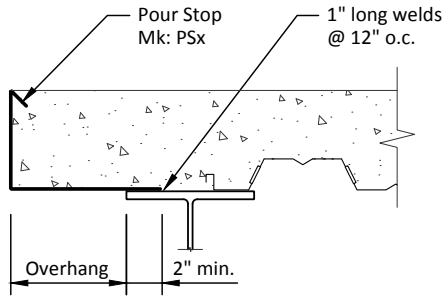


Floor Deck Accessory Details

FLOOR DECK ACCESSORY INSTALLATION DETAILS

Note:

- Accessories shall be attached to supporting structure or deck as required for serviceability, but spaced not to exceed criteria shown in details.



COLUMN CLOSURE DETAIL



ROLLED-IN HANGER TAB DETAIL

Single tab capacity = 100 lbs.
Available in deck types B, BA, BI, BIA, 1.5FDR, 1.5FDI, 2.0FD, 3.0FD, 1.5CD, 1.5CDI, 2.0CD, 3.0CD

Pour Stop Gage Selection

GAGE SELECTION TABLE

Slab Depth (in.)	Overhang (in.)												
	0	1	2	3	4	5	6	7	8	9	10	11	12
	Required Gage												
4.00	20	20	20	20	18	18	16	14	14	12	12	10	10
4.25	20	20	20	18	18	16	16	14	12	12	12	10	10
4.50	20	20	20	18	18	16	16	14	12	12	12	10	10
4.75	20	20	18	18	16	16	14	14	12	12	10	10	10
5.00	20	20	18	18	16	16	14	14	12	12	10	10	
5.25	20	20	18	16	16	14	14	12	12	12	10	10	
5.50	20	18	18	16	16	14	14	12	12	12	10	10	
5.75	20	18	18	16	14	14	12	12	12	12	10	10	
6.00	20	18	16	16	14	14	12	12	12	12	10	10	
6.25	18	18	16	16	14	14	12	12	12	10	10	10	
6.50	18	16	16	14	14	12	12	12	12	10	10		
6.75	18	16	16	14	14	12	12	12	10	10	10		
7.00	18	16	14	14	12	12	12	12	10	10	10		
7.25	16	16	14	14	12	12	12	10	10	10	10		
7.50	16	14	14	12	12	12	12	10	10	10			
7.75	16	14	14	12	12	12	12	10	10	10			
8.00	16	14	12	12	12	12	10	10	10				
8.25	14	14	12	12	12	12	10	10	10				
8.50	14	14	12	12	12	10	10	10					
8.75	14	12	12	12	12	10	10	10					
9.00	14	12	12	12	10	10	10	10					
9.25	14	12	12	12	10	10	10						
9.50	12	12	12	10	10	10	10						
9.75	12	12	12	10	10	10							
10.00	12	12	10	10	10	10							
10.25	12	12	10	10	10								
10.50	12	12	10	10	10								
10.75	12	10	10	10									
11.00	12	10	10	10									
11.25	12	10	10										
11.50	12	10	10										
11.75	10	10	10										
12.00	10	10											

DESIGN THICKNESS

Gage	Thickness (in)
20	0.0358
18	0.0474
16	0.0598
14	0.0747
12	0.1046
10	0.1345

NOTES:

- Concrete is normal weight (150 pcf).
- Material yield stress is 33 ksi. Pour stops have been designed to support the concrete dead load and temporary 20 psf construction live load.
- Vertical deflection at the heel of the pour stop is limited to 0.25 in. and horizontal deflection at the toe of the vertical leg is limited to 0.25 in. Deflection is calculated under dead weight of concrete only, and theoretical deflection is increased by 20% to account for test scatter per SDI FDDM.
- This chart does not take into account the stiffness of the supporting member.
- Pour stops are to be continuously supported along their length with minimum 2 in. bearing.
- Minimum 1/2 in. long vertical leg return lip is recommended for all gages.

